

LANDROVER, SERIES 2A, ALL TYPES

FITTING NUMBER PLATES

UNIT WORK

INTRODUCTION

1. All subject vehicles will be fitted with front and rear number plates before issue to units.

DETAIL

Front Plate

2. (a) Front number plate will be mounted in the centre of the front bumper bar.
(b) Manufacture two angle brackets using 1 in x 1/8 in x 7 in long mild steel, bent to 90°, 1 1/2 in from one end (fig 1).
(c) Using the outside holes of the number plate as a template, and bottom of the plate level with the bend of the bracket, drill brackets, pop rivet or screw number plate to brackets.
(d) Place assembly on top of the bumper bar with short legs of bracket level with rear edge and in the centre of the bumper bar (fig 2), drill 1/4 in dia clearance holes through brackets and bumper bar, bolt brackets to bumper bar.

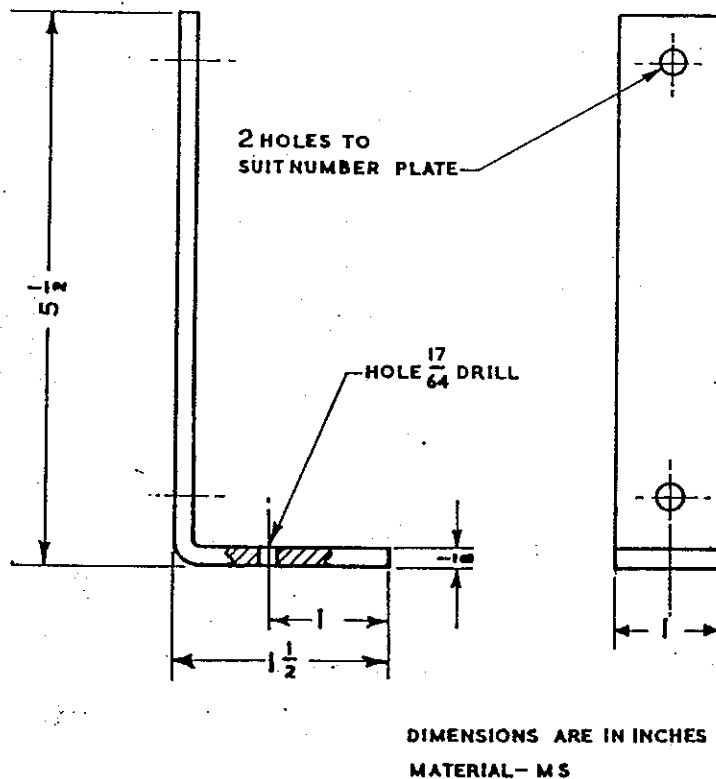


FIG 1 - ANGLE BRACKET

Rear Plate

3. (a) Rear number plate will be mounted directly under number plate illumination light.
- (b) Using rear number plate as a template, position number plate centrally ^{IN PANEL IMMEDIATELY} under rear number plate light, mark and drill, screw or pop rivet number plate in position.
- (c) If necessary bend end of number plate around edge of vehicle.

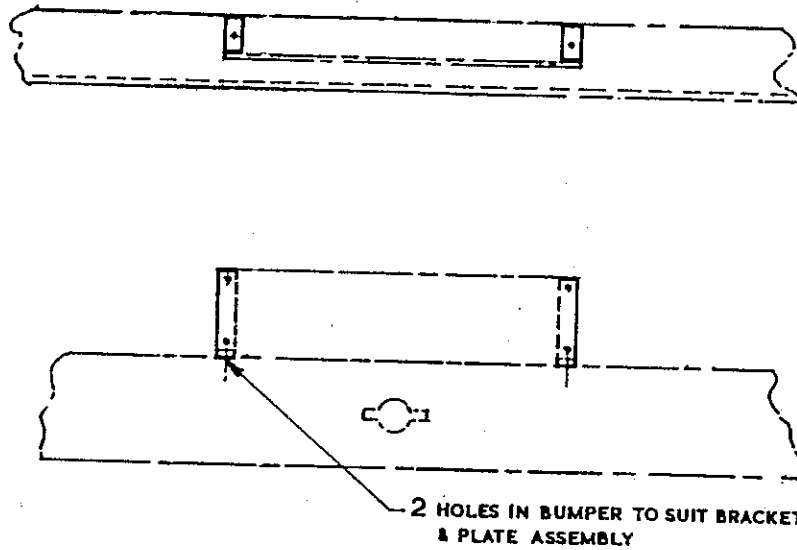


FIG 2 - VIEW OF BUMPER BAR FROM FRONT

E N D